



# Streamline access and achieve site-wide compliance

Rapid Aware is AI-powered computer vision technology for workplaces that want to enhance safety, strengthen security and improve operational efficiencies.

Whether it's streamlining access, enforcing site-wide compliance or monitoring for hazards and incidents, Rapid Aware, together with Rapid's other products, create a total end-to-end Health and Safety solution.



## Free support

Our Client Services Team are ready to help with your technical questions and to ensure you get the most out of your Rapid products.

## Doorkeeper

Doorkeeper turns an iPad into a check-in kiosk. Perfect for indoor environments to securely check in visitors, employees and contractors.

<b>Multiple check in flows</b>	Set up different flows based on visitor type and check in with face authentication or a QR code.
<b>Compliance checks</b>	Perform ID and compliance checks, and allow workers to complete what's pending.
<b>Notifications</b>	Be notified when guests arrive, or if employees have not checked in by a certain time.
<b>Time and attendance</b>	Accurately record time and attendance and populate timesheet data to streamline payroll.
<b>Access control</b>	Automatically grant access if the worker is inducted and authorised.

## AI Checkpoints

Using cameras at pedestrian and vehicle checkpoints, Rapid Aware can ID check workers and their compliance and automatically grant access if inducted and compliant. Customers that implement Rapid Aware have seen compliance rates go from as low as 30% to 98%.

<b>Pedestrian access</b>	Make turnstile access fast and secure with a face ID and compliance check at the gate.
<b>Vehicle access</b>	Identify and grant access to vehicles with automatic license plate recognition.
<b>Dwell times</b>	Capture dwell times to ensure vehicles enter and exit within the allotted time.
<b>Contractor compliance</b>	Fully integrated with Rapid Induct and Contractor Management for real-time compliance management.

Fully integrated modular workforce management software.

## AI Monitoring

Integrating with workplace cameras, Rapid Aware provides pre-built AI models to detect objects such as PPE gear, forklift proximity, mobile phones, and cleaning equipment.

<b>PPE detection</b>	Track instances of missing PPE, such as hard hats and hi-vis vests.
<b>Forklift proximity</b>	Detect and record close encounters between forklifts and pedestrians with proximity alerts.
<b>Mobile phones</b>	Detect the use of mobile phones in restricted areas to help prevent avoidable accidents.
<b>Cleaning equipment</b>	Ensure cleaners are performing their assigned tasks by detecting cleaning equipment on site.

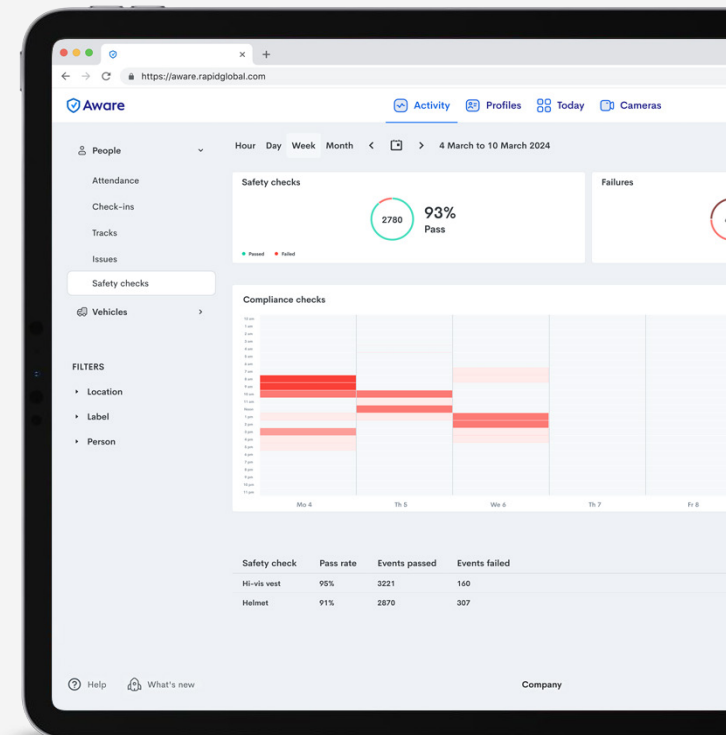
## Safety Agent

Enhance workplace safety with an AI-powered Safety Agent that actively monitors the workplace and delivers real-time alerts and valuable insights for better hazard management.

<b>Person down</b>	Gain real time visibility into potential injuries and accidents.
<b>Slips and trips</b>	Identify instances of slips and trips to better manage potential hazards.
<b>Unsafe behaviour</b>	Be alerted if someone is in a restricted area, climbing a fence or is on the roof.
<b>Collisions</b>	Be alerted if a forklift comes into contact with a pedestrian.

Fully integrated modular workforce management software.

# Reduce safety incidents with predictive hazard management



## Access knowledge and insights with AI Assist

AI Assist is a chatbot within the Rapid Aware web app that allows users to quickly access specific site knowledge and insights. Users can simply input questions and receive answers in 1-2 seconds.

## Benefit from a range of integrations

<b>Rapid modules</b>	Enjoy full access to all Rapid modules for a total end-to-end health and safety solution.
<b>Access control</b>	Utilise access control relays, or direct integrations with Protege GX or Inception for site access.
<b>Time and attendance</b>	Streamline payroll with integrations to MYOB and Employment Hero.

## Stay protected with data privacy and security

We adhere to the Australian Privacy Principles (APPs) contained in the Privacy Act 1988 (Cth) (Privacy Act) and to the extent applicable, the EU General Data Protection Regulation (GDPR).

All client data is stored and encrypted in disparate cloud systems, built on the Asia Pacific (Sydney) region of the AWS (Amazon Web Services) platform. Our authentication partner is Auth0, an industry-leading identity management platform. Rapid Aware offers RS256 signed JWTs for authentication via Auth0, in line with OIDC compliance.

Rapid Aware applications are accessed via HTTPS using Transport Layer Security (TLS) encryption. Rapid Aware utilises multiple layers of security controls (software, physical and process based) to protect client data.



**Request a demo**

Scan the QR code to discover more



Fully integrated modular workforce management software.

# Boost operational efficiency

## Rapid Global

### Head Office

Suite 3, Level 15  
309 Kent Street  
Sydney, 2000  
New South Wales

1800 307 595  
+61 88405 1100

[sales@rapidglobal.com](mailto:sales@rapidglobal.com)  
[rapidglobal.com](https://rapidglobal.com)

